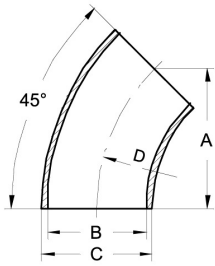
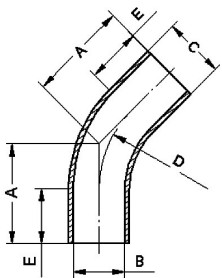


Fittings for welding DIN 11852

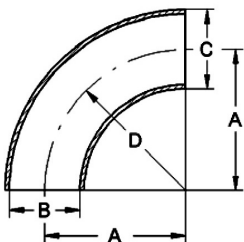
Art.No	EUR	Art.No	EUR
--------	-----	--------	-----

Bend 45° DIN 11852


DN	A	B	C	D	AISI304		AISI316L-1.4404	
10	17	10	13	26	538830	Enquiry	538930	6,40
15	23	16	19	35	538831	5,60	538931	6,80
20	27	20	23	40	538832	6,50	538932	7,50
25	34	26	29	50	538833	9,60	538933	9,80
32	37	32	35	55	538834	11,30	538934	11,90
40	41	38	41	60	538835	12,20	538935	12,80
50	48	50	53	70	538836	14,10	538936	14,90
65	55	66	70	80	533337	20,20	533437	22,50
80	62	81	85	90	533338	26,30	533438	40,80
100	69	100	104	100	533339	33,30	533439	47,30
125	131	125	129	187,5	533341	78,80	533441	90,10
150	157	150	154	225	533342	94,10	533442	Enquiry
200	300	200	204	300	533344	142,70	533444	Enquiry

Bend 45° DIN 11852, long


DN	A	B	C	D	E	AISI304		AISI316L-1.4404	
10	35,8	10	13	26	25	569030	Enquiry	569130	Enquiry
15	39,5	16	19	35	25	569031	Enquiry	569131	Enquiry
20	41,6	20	23	40	25	569032	Enquiry	569132	Enquiry
25	60,7	26	29	50	40	569033	Enquiry	569133	Enquiry
32	62,8	32	35	55	40	569034	Enquiry	569134	Enquiry
40	64,9	38	41	60	40	569035	Enquiry	569135	Enquiry
50	69	50	53	70	40	569036	Enquiry	569136	Enquiry
65	73,1	66	70	80	40	569037	Enquiry	569137	Enquiry
80	92,3	81	85	90	55	569038	Enquiry	569138	Enquiry
100	96,4	100	104	100	55	569039	Enquiry	569139	Enquiry
125	135,2	125	129	187,5	57,5	569041	Enquiry	569141	Enquiry

Bend 90° DIN 11852


DN	A	B	C	D	AISI304		AISI316L-1.4404	
10	26	10	13	26	538630	Enquiry	538730	8,30
15	35	16	19	35	538631	7,50	538731	8,30
20	40	20	23	40	538632	7,50	538732	8,90
25	50	26	29	50	538633	12,30	538733	13,50
32	55	32	35	55	538634	14,20	538734	15,60
40	60	38	41	60	538635	15,10	538735	16,90
50	70	50	53	70	538636	17,50	538736	20,70
65	80	66	70	80	532137	28,90	532237	32,60
80	90	81	85	90	532138	44,40	532238	50,50
100	100	100	104	100	532139	56,90	532239	64,20
125	187,5	125	129	187,5	532141	114,80	532241	124,10
150	225	150	154	225	532142	120,50	532242	Enquiry
200	300	200	204	300	532144	204,30	532244	Enquiry